



**WENTWORTH**  
INSTITUTE OF TECHNOLOGY

# College of Arts and Sciences

Boston, MA

*Innovation in the Making*





## The Five Factors of Career Success

Wentworth offers a unique combination of five factors that help ensure career success through a seamlessly integrated program of learning, building, and doing. Yesterday's credentials are no match for the challenges of the future—only at Wentworth do all these factors converge to prepare you for the career you envision.

### 1 Focused Academics

Wentworth's strong academic offerings are guided by our commitment to EPIC Learning (Externally collaborative, Project-based, Interdisciplinary Culture). Our programs emphasize both curricular and extracurricular learning, enabling students from different majors to collaborate on complex projects—just as they would in the workplace.

### 2 Cooperative Learning

Students complete a minimum of two semesters of cooperative learning experiences (co-ops), applying classroom knowledge in professional working environments. Through co-ops, students learn to think on their feet as they tackle projects that have real-world implications and impact.

### 3 Innovation & Entrepreneurship

Wentworth provides opportunities for students to adopt an entrepreneurial mindset and identify and fulfill technical, societal, and economic needs with innovative ideas and solutions that the world has never seen before.

### 4 Collaboration & Partnerships

Wentworth collaborates with the Colleges of the Fenway as well as a host of universities, corporations, neighboring communities, and other partners on a wide range of projects. These opportunities provide students with hands-on experience as well as important professional connections.

### 5 Ideal Location

The Wentworth campus is conveniently located within a world-class center of technology, business, and culture. Some of the most respected institutions of higher learning, medicine, and finance are based in Boston—which even boasts an area known as the Innovation District. The combination of these elements creates ideal work and learning opportunities for Wentworth students.



## Welcome from the Dean

**WENTWORTH IS A MAKER COMMUNITY:** We build things here. As a student in the College of Arts and Sciences, you will build something here, too. It could be a business; it could be a technology solution; it could be your résumé; it could be your future as a fully prepared professional. Through our varied degree programs, you will develop the business and interpersonal skills you need to be an effective manager and leader. You will gain the analytical and technical skills required to perform and apply advanced mathematical functions and manage complex technology systems. You will learn to understand and balance the needs of diverse stakeholders with the outcomes of strategic planning in order to get things done.

At Wentworth, we learn through teaching and we learn through doing. Our career-oriented curriculum is focused on preparing you for a successful and rewarding career in your chosen field. Our exceptional faculty are both experienced and accessible, working closely with you to guide you through your academic and career goals. You will also have opportunities to translate theory into practice and hone your skills through cooperative learning experiences, community service projects, and by participating in one of our management clubs.

*Innovation in the Making.* It's what we're about, and what you can build here. We look forward to supporting your journey.

**Patrick Hafford,** Dean

Find us online: [wit.edu/cas](http://wit.edu/cas)



## A MAJOR SELECTION OF MINORS

Whether to delve more deeply into aspects of their major, or to branch out and gain an understanding of other disciplines, students may choose to declare a minor. Though requirements vary by program, minors typically comprise 16 to 20 credits of course work; additional credits earned through directed research or project-based learning may also be required. Wentworth currently offers minors in the following areas:

Aerospace Engineering

Applied Mathematics

Biology

Business Management

Chemistry

Civil Engineering

Computer Networking

Computer Science

Construction Management

Electrical Engineering

Industrial Design

Interdisciplinary  
Bioinformatics

Manufacturing

Media, Culture, and  
Communications Studies

Performing Arts  
(offered through Colleges of the Fenway)

Physics



# Applied Mathematics

## **BACHELOR OF SCIENCE IN APPLIED MATHEMATICS**

Our undergraduate program links mathematics with the worlds of science, technology, engineering, and social science. In the Applied Mathematics program, students will learn to integrate analytical and computational tools in the modeling of physical, biological, and economic processes, while developing problem-solving skills that apply across disciplines. Our graduates can choose from a wide range of careers, including data science, biostatistics, software development, finance, cryptography, quality assurance, systems engineering, and operations research. Wentworth's Applied Mathematics degree is a three-year program with a four-year option (the curriculum is the same in both programs).







# Biological Engineering

## **BACHELOR OF SCIENCE IN BIOLOGICAL ENGINEERING**

Biological engineering integrates the physical sciences, mathematics, and engineering with cellular and molecular biology for a wide range of applications involving living organisms and the natural world. Biological engineers apply the engineering principles of analysis, synthesis, and design to biological systems such as the environment, water, medicine, energy, materials, and food.

Through hands-on learning attained through extensive lab work and two semesters of co-ops, students are immersed in the convergence of physical sciences, life sciences, and engineering, giving them the opportunity to create innovative solutions to biological-based problems. With this degree, students can build careers in healthcare, pharmaceuticals, industry, and organizations focused on the environment. The biological engineering major can also serve as preparation for advanced graduate studies, including pre-med programs. (Organic Chemistry II is a pre-med prerequisite.)

---

Biological Engineering is an interdisciplinary major with the College of Arts and Sciences and the College of Engineering and Technology.

---





## ACCELERATE FUELS INNOVATION

Accelerate, Wentworth Innovation + Entrepreneurship Center builds innovative thinking and entrepreneurial confidence among students. Accelerate extends Wentworth's existing strengths and disciplines to drive thought partnership and interdisciplinary engagement while connecting students with mentors, alumni, and professionals who inspire them to learn, explore, push their ideas, follow their passion, and grow. Rather than teaching entrepreneurship from a theoretical perspective, Accelerate embraces the "maker culture" and focuses on producing solutions in the physical world while also providing mentoring, workshops, and connections to industry.

To date, Accelerate has engaged over 5,400 participants through events and programming. More than 1,000 students have submitted over 700 ideas as part of interdisciplinary teams, and have been awarded a total of \$279,000 in funding to develop their early-stage ideas. Accelerate offers four main programs to all Wentworth students:

- **Startup Challenge** – A platform for interdisciplinary teams to nurture their passion from idea to prototype while expanding their knowledge and pitching for gap funding (up to \$10,000) to make it real.
- **Social Innovation Lab** – A 12-week program for six co-op students from six different disciplines, providing an immersive experience partnering with numerous external organizations to address large-scale social challenges impacting individuals and communities.
- **External Collaborations** – Bootcamps for civic and service innovation bringing together students across Boston, design thinkers, experts, and community partners from diverse disciplines to ideate around a challenge facing the city.
- **Innovate!** – Innovation immersions implemented in classrooms and at other engagement points across campus and in the curriculum to expose students to the mindset and competencies relevant for innovation + entrepreneurship.





# 98%

OF SURVEY RESPONDENTS  
FROM THE CLASS OF  
2016 ACCEPTED A JOB OR  
ENROLLED IN A GRADUATE  
DEGREE PROGRAM WITHIN  
SIX MONTHS OF GRADUATION











**THE VALUE OF COOPERATIVE EDUCATION**

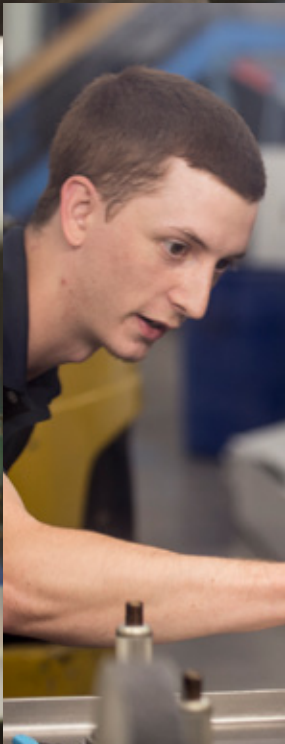
All undergraduate programs at Wentworth require a minimum of two semesters of cooperative learning experiences (co-ops). Co-ops are full-time work experiences in real-world settings, enabling students to graduate with eight months to one year of professional, paid experience in their field and on their résumé.

For most students, co-ops occur in the spring semester of the junior year and the fall semester of the senior year. Members of Wentworth’s career services staff work individually with each student to find their ideal co-op placements.

**WENTWORTH CO-OP SCHEDULE FOR MOST PROGRAMS OF STUDY:**

YEAR 1		
Fall CLASSES	Spring CLASSES	Summer BREAK
YEAR 2		
Fall CLASSES	Spring CLASSES	Summer OPTIONAL CO-OP*
YEAR 3		
Fall CLASSES	Spring CO-OP	Summer CLASSES
YEAR 4		
Fall CO-OP	Spring CLASSES	Summer CLASSES

\*Optional co-op or summer break







## Business Management

### BACHELOR OF SCIENCE IN BUSINESS MANAGEMENT

With a strong professional foundation built in part through two semesters of hands-on cooperative learning experience, Wentworth's Bachelor of Science in Business Management program is the only undergraduate program of its kind in Massachusetts—and one of only a few in the nation. Our students develop a strong professional foundation built in part through two semesters of hands-on cooperative learning experience. In their course work, they acquire a solid background in all areas of business and management, gaining the skills necessary to administer organizational resources in a global marketplace.

Led by an exceptional faculty, our course of study covers operations, marketing, organizational behavior, communications, accounting, finance, economics, and business law. Students acquire the flexibility to adapt to a changing economy and launch successful careers in project management, marketing, IT management, accounting and finance, entrepreneurship, human resources, and operations management.

Students choose one of two concentrations:

- **Entrepreneurship** – Students learn to move from the initial spark that generates an innovative idea, to the feasibility study that tests the concept, through the business model that brings together all of the necessary elements to start and maintain a successful business. Students have the opportunity to develop their ideas through Accelerate, Wentworth Innovation + Entrepreneurship Center.
- **Technology Project Management** – Students learn to plan and manage technology-based projects to successfully meet the three principal goals: on time, within scope, and within agreed budget.





## Computer Information Systems

### **BACHELOR OF SCIENCE IN COMPUTER INFORMATION SYSTEMS**

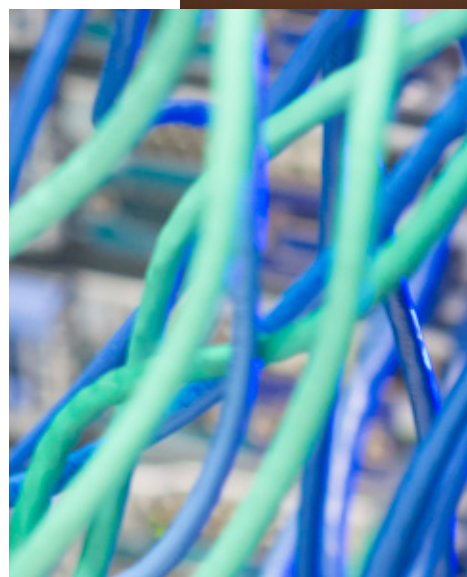
Wentworth's Computer Information Systems program links the worlds of business and computer science. Through an interdisciplinary lens—encompassing courses in computer science, business management, math, science, humanities, and social science—we study business organizations and the programming, databases, and networks that support them. A minor in business management is built into the degree program. Students can also select an additional minor of their choice.

Offering a solid background in the analysis, design, development, deployment, and administration of computer-based information systems within a business management context, graduates are well prepared for the growing number of opportunities in the field. Students complement their broad business knowledge with strong technical skills in databases, systems analysis and design, business processes, networking, and project management, along with essential problem-solving skills.

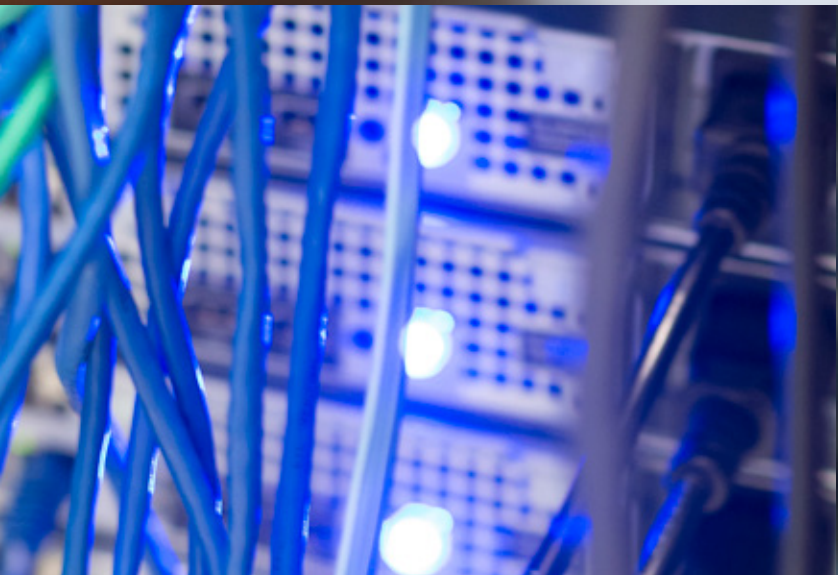
---

Computer Information Systems is an interdisciplinary major with the College of Arts and Sciences and the College of Engineering and Technology.

---







#### ACCREDITATIONS

- **Wentworth:** Accredited by the New England Association of Schools and Colleges.
- Please visit [wit.edu/accreditation](http://wit.edu/accreditation) for information on individual program accreditation.

# Quick Facts

## A VIBRANT CAMPUS LIFE IN A WORLD-CLASS CITY

Wentworth's fully wireless campus offers a safe and secure environment within a world-class center of higher education, culture, and business. Campus amenities include co-ed residence halls; a dining hall; bookstore; fitness center; athletic fields; gymnasiums; a brand-new, state-of-the-art library and learning commons; high-tech computer, engineering, and science labs; a 24-hour Department of Public Safety, and easy access to nearby restaurants, museums, and public transportation. Health, counseling, intercultural, learning, and career centers are available to all students. Wentworth also features more than 50 student organizations and chapter memberships in professional associations. [wit.edu/reslife](http://wit.edu/reslife)

## CAMPUS VISITS

Register online for daily tours, open houses in the fall, and special campus events throughout the year. [wit.edu/visit](http://wit.edu/visit)

## ADMISSIONS

Wentworth evaluates admission applications on a rolling basis, once all necessary documentation has been submitted. Applications are available online. Priority deadline for applicants is February 15. [wit.edu/apply](http://wit.edu/apply)

## COSTS

Tuition for the 2017-18 academic year is \$32,954, which includes the cost of a laptop computer; typical room and board expenses are \$13,640 per academic year.

## FINANCIAL AID

Approximately 85 percent of Wentworth students receive some type of financial aid (federal, state, Wentworth, and private). Wentworth offers both merit scholarships and need-based financial aid. In 2017, 99 percent of accepted students received a merit scholarship. The FAFSA is required to be considered for federal aid. **Call our Financial Aid Office at 1-800-222-9368 to learn more.**

## ATHLETICS

An NCAA Division III school, the majority of Wentworth's 17 intercollegiate varsity athletic teams participate in the Commonwealth Coast Conference. [wit.edu/athletics](http://wit.edu/athletics)

- |                     |                     |
|---------------------|---------------------|
| → Baseball (M)      | → Lacrosse (M, W)   |
| → Basketball (M, W) | → Rowing (M)        |
| → Cross Country (M) | → Soccer (M, W)     |
| → Golf (M)          | → Softball (W)      |
| → Ice Hockey (M)    | → Tennis (M, W)     |
| → Indoor Track (M)  | → Volleyball (M, W) |

## COLLEGES OF THE FENWAY

Colleges of the Fenway is one of Boston's largest academic collaborations. This partnership with Emmanuel, Simmons, and Wheelock Colleges, Massachusetts College of Art and Design, and Massachusetts College of Pharmacy and Health Sciences University features cross-registration, social events, intramural sports, clubs, and an expanded campus community. [colleges-fenway.org](http://colleges-fenway.org)

## RANKINGS

Wentworth is ranked #71 out of 137 ranked schools in the "Regional Universities (North)" category in *U.S. News & World Report's* 2018 "Best Colleges." The Institute is also ranked #44 out of 200 ranked schools in the "Best Undergraduate Engineering Programs Whose Highest Degree is a Bachelor's or Master's" category.

Wentworth has been named a "Best in the Northeast" college by The Princeton Review on its website feature "2017 Best Colleges: Region by Region" for 10 consecutive years.

The Brookings Institution ranks Wentworth among the top seven schools in the United States for occupational earnings power, with a score of 100/100.

Payscale.com ranks Wentworth among the top 6 percent (99/1833) of colleges and universities in its 2017 College ROI Report.

*The Wall Street Journal's* college rankings place Wentworth at #478 out of 500 ranked schools and more than 1,000 total colleges and universities.

Wentworth is listed at #3 on the list of top colleges and universities in the region for career preparation, according to a survey conducted by *The Wall Street Journal* and *Times Higher Education*. [wit.edu/rankings](http://wit.edu/rankings)



# 31

ACRE CAMPUS IN  
BOSTON'S HISTORIC  
FENWAY NEIGHBORHOOD



# 4,526

STUDENTS  
(4,000 FULL-TIME)

from

# 38

STATES

and

# 58

COUNTRIES






**COLLEGE OF ARTS AND SCIENCES**

Applied Mathematics • Biological Engineering • Business Management • Computer Information Systems



550 Huntington Avenue, Boston, Massachusetts 02115-5998

1.800.556.0610 or 617.989.4000 | [admissions@wit.edu](mailto:admissions@wit.edu) | [wit.edu](http://wit.edu) | [wit.edu/viewbook](http://wit.edu/viewbook)

   @witadmissions  /wentworthadmissions  /WentworthInstTech