



**WENTWORTH**  
INSTITUTE OF TECHNOLOGY

# College of Architecture, Design and Construction Management

Boston, MA

*Innovation in the Making*





## The Five Factors of Career Success

Wentworth offers a unique combination of five factors that help ensure career success through a seamlessly integrated program of learning, building, and doing. Yesterday's credentials are no match for the challenges of the future—only at Wentworth do all these factors converge to prepare you for the career you envision.

### 1 Focused Academics

Wentworth's strong academic offerings are guided by our commitment to EPIC Learning (Externally collaborative, Project-based, Interdisciplinary Culture). Our programs emphasize both curricular and extracurricular learning, enabling students from different majors to collaborate on complex projects—just as they would in the workplace.

### 2 Cooperative Learning

Students complete a minimum of two semesters of cooperative learning experiences (co-ops), applying classroom knowledge in professional working environments. Through co-ops, students learn to think on their feet as they tackle projects that have real-world implications and impact.

### 3 Innovation & Entrepreneurship

Wentworth provides opportunities for students to adopt an entrepreneurial mindset and identify and fulfill technical, societal, and economic needs with innovative ideas and solutions that the world has never seen before.

### 4 Collaboration & Partnerships

Wentworth collaborates with the Colleges of the Fenway as well as a host of universities, corporations, neighboring communities, and other partners on a wide range of projects. These opportunities provide students with hands-on experience as well as important professional connections.

### 5 Ideal Location

The Wentworth campus is conveniently located within a world-class center of technology, business, and culture. Some of the most respected institutions of higher learning, medicine, and finance are based in Boston—which even boasts an area known as the Innovation District. The combination of these elements creates ideal work and learning opportunities for Wentworth students.



## Welcome from the Dean

### **THE COLLEGE OF ARCHITECTURE, DESIGN AND CONSTRUCTION MANAGEMENT**

offers a range of degree programs in which students gain the skills and knowledge needed to design, plan, build, and enhance physical structures. Yet in a larger sense, what we seek to instill in our students is a desire not merely to manipulate space but to solve problems for society. The built environment has a significant impact on how people live, work, and play. It can aid in or impede our comfort and productivity, and can be in or out of harmony with its surroundings.

Responsible architects, designers, and construction managers can profoundly influence people's lives and the community in which their building stands. Our talented faculty apply their passion and experience to prepare students for meaningful careers in their chosen field. In the classroom, in the studio, and in their co-ops, students learn to enrich the spaces in which we live and work, develop unique and inspiring products, and improve the quality and sustainability of our public environments.

*Innovation in the Making.* It's what we're about, and what you can build here. We look forward to supporting your journey.

**Charles Hotchkiss**, Dean

Find us online: [wit.edu/cadcm](http://wit.edu/cadcm)



## A MAJOR SELECTION OF MINORS

Whether to delve more deeply into aspects of their major, or to branch out and gain an understanding of other disciplines, students may choose to declare a minor. Though requirements vary by program, minors typically comprise 16 to 20 credits of course work; additional credits earned through directed research or project-based learning may also be required. Wentworth currently offers minors in the following areas:

**Aerospace Engineering**

**Applied Mathematics**

**Biology**

**Business Management**

**Chemistry**

**Civil Engineering**

**Computer Networking**

**Computer Science**

**Construction Management**

**Electrical Engineering**

**Industrial Design**

**Interdisciplinary  
Bioinformatics**

**Manufacturing**

**Media, Culture, and  
Communications Studies**

**Performing Arts**

(offered through Colleges of the Fenway)

**Physics**





# Architecture

## **BACHELOR OF SCIENCE IN ARCHITECTURE MASTER OF ARCHITECTURE**

Wentworth's architectural programs challenge students to understand the impact of design on individuals, communities, societies, and the natural environment. We prepare students to pursue rewarding careers in architecture or related design disciplines. In fact, our Boston location offers an ideal setting for aspiring architects—exceptional examples of both classic and modern designs surround our campus. Wentworth faculty provide a broad range of perspectives and expertise, coupled with a strong commitment to design, research, and professional practice.

Both the Bachelor of Science in Architecture program and the Master of Architecture program encourage deep explorations into the material culture of architecture, and challenge students to deploy this knowledge in ways that enrich the built environment and enhance people's lives.

→ **Undergraduate students** may study abroad for a semester in Berlin through a department-sponsored program led by Wentworth architecture faculty. During their third year, students focus their educational interests, choosing one of three concentrations: Adaptive Interventions, Emerging Technologies, or Urbanism.

→ **The Master of Architecture (M.Arch)** degree provides graduate students with the academic credentials required to take the Architectural Registration Exam (ARE) and achieve professional licensure. The M.Arch is a professional degree that is fully accredited by the National Architectural Accrediting Board (NAAB).







# Industrial Design

## BACHELOR OF SCIENCE IN INDUSTRIAL DESIGN

Industrial Design combines art, technology, business, and social awareness to design products and experiences that enhance the way people live. The look, feel, and utility of essential everyday objects—consumer electronics, athletic shoes, toys, medical devices, sports equipment, backpacks, and more—result from the creative vision of industrial designers.

Wentworth's four-year Bachelor of Science in Industrial Design is a NASAD-accredited program. Our focus is on teaching students the necessary technical skills and professional methodologies required to be a successful designer. All studio classes employ project-based learning and many provide opportunities to engage in interdisciplinary (EPIC) collaborations. Students learn the practical design techniques it takes to lead innovation, such as, conducting user research, brainstorming, sketching concepts, building physical/digital prototypes, testing ideas, and making polished presentations. Our wood, metal, and plastic shops, as well as the latest rapid prototyping technology and digital illustration tools, comprise a playground for fruitful innovation and creation.

We also offer an optional study abroad program in Europe that enables students to see the power of design in different cultural contexts. Our graduates move directly into the field of design working for some of the top companies in the business, including Hasbro, Kohler, Converse, Bose, iRobot, Nike, Under Armour, Swarovski, and IDEO, while others choose a more entrepreneurial path, developing their ideas into new potential business endeavors.





## ACCELERATE FUELS INNOVATION

Accelerate, Wentworth Innovation + Entrepreneurship Center builds innovative thinking and entrepreneurial confidence among students. Accelerate extends Wentworth's existing strengths and disciplines to drive thought partnership and interdisciplinary engagement while connecting students with mentors, alumni, and professionals who inspire them to learn, explore, push their ideas, follow their passion, and grow. Rather than teaching entrepreneurship from a theoretical perspective, Accelerate embraces the "maker culture" and focuses on producing solutions in the physical world while also providing mentoring, workshops, and connections to industry.

To date, Accelerate has engaged over 5,400 participants through events and programming. More than 1,000 students have submitted over 700 ideas as part of interdisciplinary teams, and have been awarded a total of \$279,000 in funding to develop their early-stage ideas. Accelerate offers four main programs to all Wentworth students:

- **Startup Challenge** – A platform for interdisciplinary teams to nurture their passion from idea to prototype while expanding their knowledge and pitching for gap funding (up to \$10,000) to make it real.
- **Social Innovation Lab** – A 12-week program for six co-op students from six different disciplines, providing an immersive experience partnering with numerous external organizations to address large-scale social challenges impacting individuals and communities.
- **External Collaborations** – Bootcamps for civic and service innovation bringing together students across Boston, design thinkers, experts, and community partners from diverse disciplines to ideate around a challenge facing the city.
- **Innovate!** – Innovation immersions implemented in classrooms and at other engagement points across campus and in the curriculum to expose students to the mindset and competencies relevant for innovation + entrepreneurship.

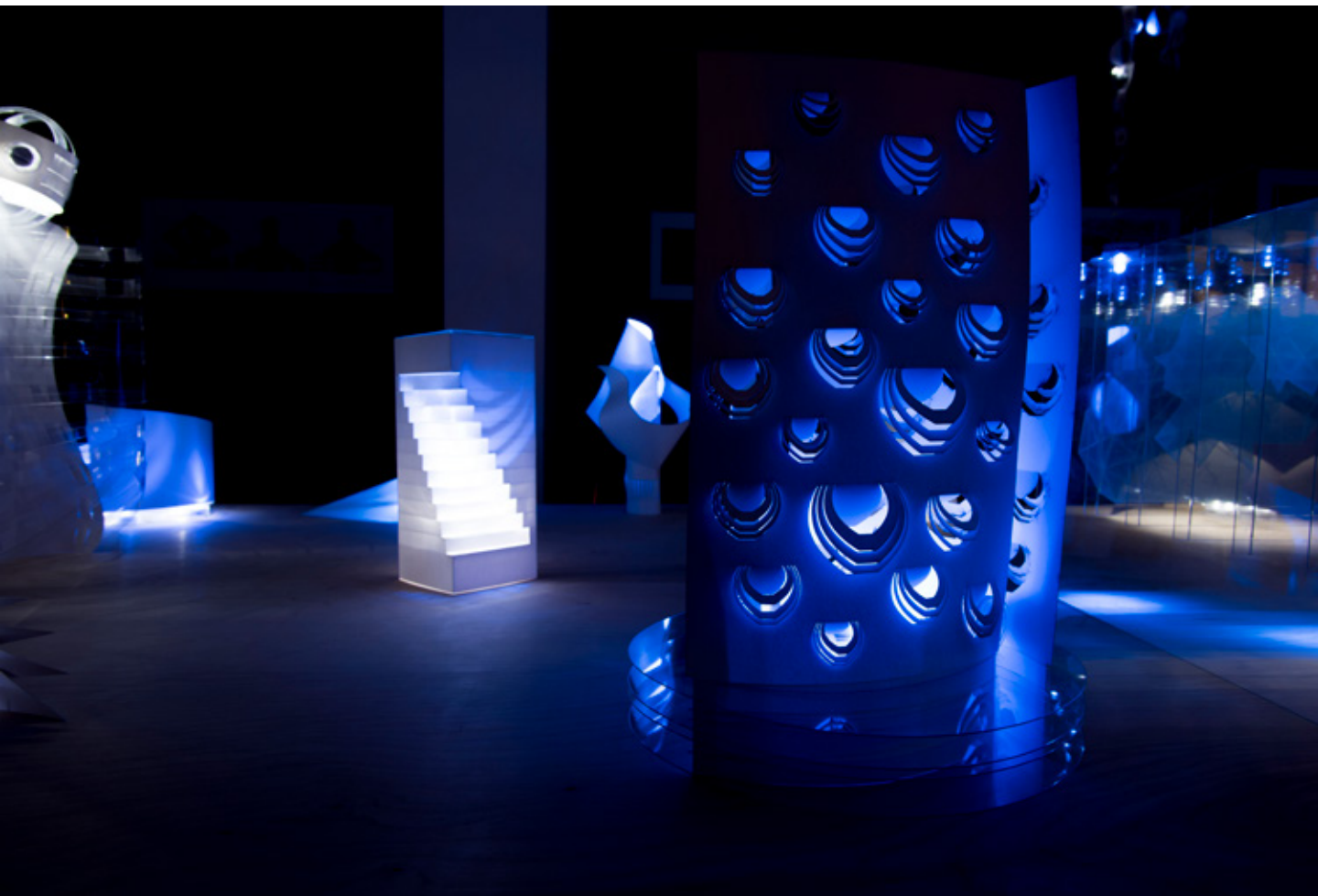




MAJORS AND  
16 MINORS



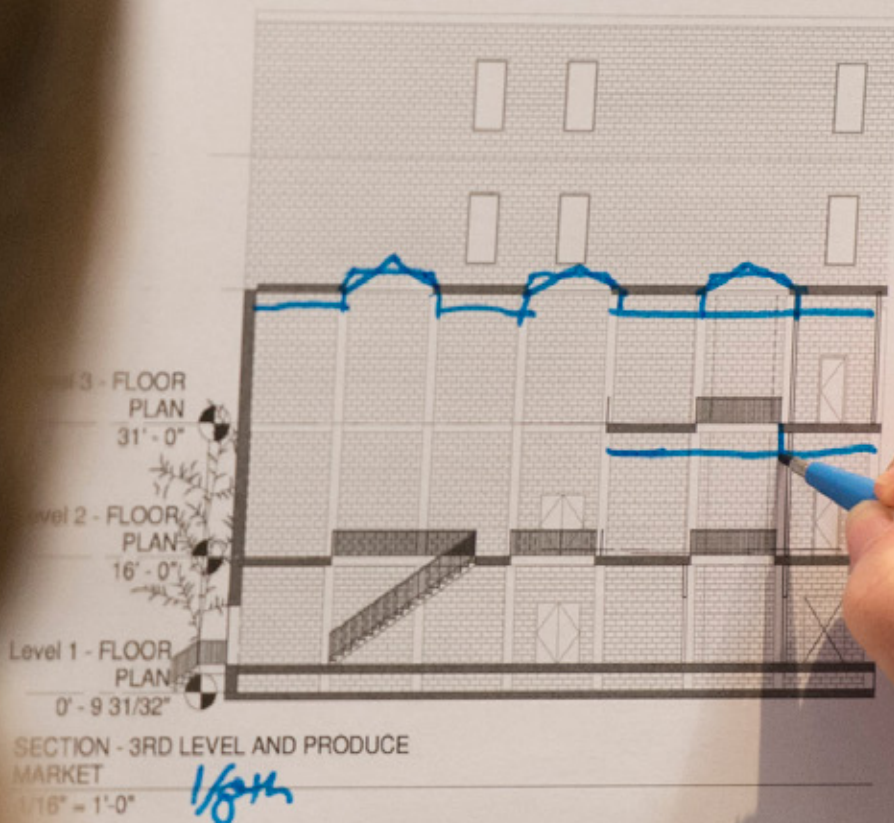




# 98%

OF SURVEY RESPONDENTS  
FROM THE CLASS OF  
2016 ACCEPTED A JOB OR  
ENROLLED IN A GRADUATE  
DEGREE PROGRAM WITHIN  
SIX MONTHS OF GRADUATION





## THE VALUE OF COOPERATIVE EDUCATION

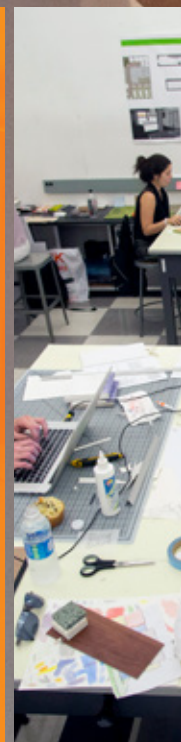
All undergraduate programs at Wentworth require a minimum of two semesters of cooperative learning experiences (co-ops). Co-ops are full-time work experiences in real-world settings, enabling students to graduate with eight months to one year of professional, paid experience in their field and on their résumé.

For most students, co-ops occur in the spring semester of the junior year and the fall semester of the senior year. For Architecture students, co-ops occur spring semester of the sophomore year and the summer semester of the junior year. Members of Wentworth's career services staff work individually with each student to find their ideal co-op placements.

## WENTWORTH CO-OP SCHEDULE FOR MOST PROGRAMS OF STUDY:

YEAR 1		
Fall CLASSES	Spring CLASSES	Summer BREAK
YEAR 2		
Fall CLASSES	Spring CLASSES	Summer OPTIONAL CO-OP*
YEAR 3		
Fall CLASSES	Spring CO-OP	Summer CLASSES
YEAR 4		
Fall CO-OP	Spring CLASSES	Summer CLASSES

\*Optional co-op or summer break







## Interior Design

### **BACHELOR OF SCIENCE IN INTERIOR DESIGN**

Wentworth's CIDA-accredited Bachelor of Science in Interior Design degree leads to eligibility for NCIDQ certification, which is required for licensure in eligible states. The program promotes the development of problem-solving and critical thinking skills in an experiential learning environment under the direction of knowledgeable and experienced faculty. Students learn how interior designers enhance the quality of life for their clients and improve the comfort, value, and functionality of our physical surroundings through the spaces they design and the products they select. Wentworth's Student Association for Interior Design provides a means for students to make valuable connections with Boston's rich community of design professionals.

Wentworth also offers many opportunities for hands-on learning, where students apply theory to real-world situations. These include:

- Various studio projects, including restaurants, museums, healthcare facilities, and workspaces.
- Collaborations with professionals from the design community and two semesters of cooperative work experience, which prepare students for their profession.
- Community-service projects that provide diverse contexts and challenges.
- Juniors have the opportunity to participate in an interdisciplinary study abroad semester in Europe with other industrial design and construction management students.





# Construction Management

## **BACHELOR OF SCIENCE IN CONSTRUCTION MANAGEMENT**

The rapidly growing profession of construction management requires technical expertise, a clear understanding of the construction process, and a unique array of problem solving, organizational, and communication skills. Wentworth's Bachelor of Science in Construction Management degree is accredited by the American Council of Construction Education. Our graduates are ready for the challenges of the construction industry, and are actively recruited by leading construction firms and related industry employers.

The Construction Management program offers a balance between academics and a hands-on, experiential approach. Students are exposed to business administration, mathematics, chemistry, and design to ensure a well-rounded skill set that will prepare them to excel in the world of construction. Our experienced faculty and staff work together to provide students with a construction management education that is nationally recognized. We also offer a strong mentoring program, student organizations, and collaboration opportunities with local design professionals to ensure ample opportunities to put theory into practice and build a foundation of knowledge and experience that will lead to a rewarding career.

While establishing a construction management background, students who choose the Facilities Management concentration will develop the skills and gain a working knowledge of current facilities management technologies and best practices.

In addition to their B.S. degree, our students receive a Construction Management in Training certificate and a 30-hour OSHA Construction Safety and Health card, both of which are in high demand by construction employers.







### ACCREDITATIONS

- **Wentworth:** Accredited by the New England Association of Schools and Colleges.
- Please visit [wit.edu/accreditation](http://wit.edu/accreditation) for information on individual program accreditation.



# Quick Facts

## A VIBRANT CAMPUS LIFE IN A WORLD-CLASS CITY

Wentworth's fully wireless campus offers a safe and secure environment within a world-class center of higher education, culture, and business. Campus amenities include co-ed residence halls; a dining hall; bookstore; fitness center; athletic fields; gymnasiums; a brand-new, state-of-the-art library and learning commons; high-tech computer, engineering, and science labs; a 24-hour Department of Public Safety, and easy access to nearby restaurants, museums, and public transportation. Health, counseling, intercultural, learning, and career centers are available to all students. Wentworth also features more than 50 student organizations and chapter memberships in professional associations. [wit.edu/reslife](http://wit.edu/reslife)

## CAMPUS VISITS

Register online for daily tours, open houses in the fall, and special campus events throughout the year. [wit.edu/visit](http://wit.edu/visit)

## ADMISSIONS

Wentworth evaluates admission applications on a rolling basis, once all necessary documentation has been submitted. Applications are available online. Priority deadline for applicants is February 15. [wit.edu/apply](http://wit.edu/apply)

## COSTS

Tuition for the 2017-18 academic year is \$32,954, which includes the cost of a laptop computer; typical room and board expenses are \$13,640 per academic year.

## FINANCIAL AID

Approximately 85 percent of Wentworth students receive some type of financial aid (federal, state, Wentworth, and private). Wentworth offers both merit scholarships and need-based financial aid. In 2017, 99 percent of accepted students received a merit scholarship. The FAFSA is required to be considered for federal aid. **Call our Financial Aid Office at 1-800-222-9368 to learn more.**

## ATHLETICS

An NCAA Division III school, the majority of Wentworth's 17 intercollegiate varsity athletic teams participate in the Commonwealth Coast Conference. [wit.edu/athletics](http://wit.edu/athletics)

- |                     |                     |
|---------------------|---------------------|
| → Baseball (M)      | → Lacrosse (M, W)   |
| → Basketball (M, W) | → Rowing (M)        |
| → Cross Country (M) | → Soccer (M, W)     |
| → Golf (M)          | → Softball (W)      |
| → Ice Hockey (M)    | → Tennis (M, W)     |
| → Indoor Track (M)  | → Volleyball (M, W) |

## COLLEGES OF THE FENWAY

Colleges of the Fenway is one of Boston's largest academic collaborations. This partnership with Emmanuel, Simmons, and Wheelock Colleges, Massachusetts College of Art and Design, and Massachusetts College of Pharmacy and Health Sciences University features cross-registration, social events, intramural sports, clubs, and an expanded campus community. [colleges-fenway.org](http://colleges-fenway.org)

## RANKINGS

Wentworth is ranked #71 out of 137 ranked schools in the "Regional Universities (North)" category in *U.S. News & World Report's* 2018 "Best Colleges." The Institute is also ranked #44 out of 200 ranked schools in the "Best Undergraduate Engineering Programs Whose Highest Degree is a Bachelor's or Master's" category.

Wentworth has been named a "Best in the Northeast" college by The Princeton Review on its website feature "2017 Best Colleges: Region by Region" for 10 consecutive years.

The Brookings Institution ranks Wentworth among the top seven schools in the United States for occupational earnings power, with a score of 100/100.

Payscale.com ranks Wentworth among the top 6 percent (99/1833) of colleges and universities in its 2017 College ROI Report.

*The Wall Street Journal's* college rankings place Wentworth at #478 out of 500 ranked schools and more than 1,000 total colleges and universities.

Wentworth is listed at #3 on the list of top colleges and universities in the region for career preparation, according to a survey conducted by *The Wall Street Journal* and *Times Higher Education*. [wit.edu/rankings](http://wit.edu/rankings)



# 4,526

STUDENTS  
(4,000 FULL-TIME)

from

# 38

STATES

and

ANNEX CENTRAL  
ENTREPRENEUR

# 58

COUNTRIES



# 31

ACRE CAMPUS IN  
BOSTON'S HISTORIC  
FENWAY NEIGHBORHOOD

**COLLEGE OF ARCHITECTURE, DESIGN AND CONSTRUCTION MANAGEMENT**






Architecture • Construction Management • Industrial Design • Interior Design



**WENTWORTH**  
INSTITUTE OF TECHNOLOGY

550 Huntington Avenue, Boston, Massachusetts 02115-5998

1.800.556.0610 or 617.989.4000 | [admissions@wit.edu](mailto:admissions@wit.edu) | [wit.edu](http://wit.edu) | [wit.edu/viewbook](http://wit.edu/viewbook)

   @witadmissions  /wentworthadmissions  /WentworthInstTech